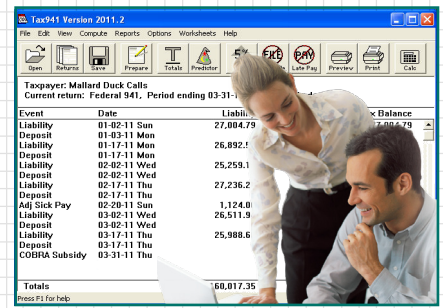


# TimeValue Software™

# Tax941™

## IRS Payroll Tax Interest, Penalty, and Forms Software



## Accurately verify IRS payroll tax interest and penalty calculations, and reliably print error-free IRS payroll tax forms

Each year, the IRS sends out more than 4 million payroll penalty notices. Until TimeValue Software™ Tax941™ payroll tax interest, penalty, and forms software, there was no easy way to see if a penalty was accurate. With Tax941 software, you can double check an IRS notice in minutes.

Tax941 software also gives you piece of mind in knowing that the forms you produce are error-free. Comprehensive error-checking assures accuracy that is second to none.

### What Can Tax941 Payroll Tax Interest, Penalty, and Forms Software Do for You?

Tax941 Software gives you the tools to do all this and more:

- Verify IRS interest and penalty amounts
- Easily predict employment tax deposit due dates
- Accurately calculate failure-to-file, failure-to-pay, and failure-to-deposit penalties
- Document your work with professional reports that show details of deposits, due dates, penalty calculations, and more
- Quickly print ready-to-file IRS payroll tax forms

### Know If There's a Penalty Before You File

You need to know about potential penalties when you prepare a form so you can catch and correct mistakes. You can avoid harsh penalties by knowing exactly when and how much to deposit.

### Eliminate IRS Penalties

When preparing returns by hand, you might see a penalty because a number was transposed or the "right" amount was in the "wrong" box. Tax941 payroll tax interest, penalty, and forms software eliminates costly mistakes by doing the math for you, before you file your payroll return.

Order online at www.TimeValue.com or fax completed form to 1-949-727-3268

## Tax941 Software Order Form

Name \_\_\_\_\_

Company \_\_\_\_\_

Title \_\_\_\_\_ Industry \_\_\_\_\_

Address \_\_\_\_\_

City \_\_\_\_\_ State \_\_\_\_\_ Zip \_\_\_\_\_

Phone \_\_\_\_\_ Fax \_\_\_\_\_

Email \_\_\_\_\_

### Payment Options (check one):

Visa  MC  Amex  Discover  Check  Invoice me

Account # \_\_\_\_\_ Exp Date \_\_\_\_\_

Signature \_\_\_\_\_

**TIMEVALUE**  
software

### To order TimeValue Software products, complete this order form and return today!

All products are backed by a one year money-back guarantee and unlimited product support for the first year.

Select Number of Users	List Price	=	Amount
Single User Edition	\$149	=	\$ 149

### Additional Users

Quantity \_\_\_\_\_ x \$99 = \$ \_\_\_\_\_

Sales Tax 7.75% (CA Only)\*\* \$ \_\_\_\_\_

Digital Download with PDF User's Guide **FREE**

Shipping CD and Printed User's Guide (\$8/user) \$ \_\_\_\_\_

Total \$ \_\_\_\_\_

\*\* Sales tax not applicable for download only orders.

Annual update service fee for single user edition is \$69. Add \$20 per additional user. The first year of update service is included in the initial purchase price.

# Double-Check an IRS Notice in Minutes with Confidence

## A. Simply Enter Your Liability and Deposit Dates and Amounts

- Tax941 payroll tax interest, penalty, and forms software does all the calculations for you and checks your work for errors before you print the forms. Comprehensive reports document your work.

## B. Tax941 Software Calculates:

- 2%, 5%, and 10% failure-to-deposit penalties
- 5% additional failure-to-deposit penalty
- 5% late filing penalty
- 0.5% and 1% late payment penalty
- IRS interest calculations

## C. Instantly Print Error-Free Ready-to-File Tax Forms

- Tax941 payroll tax interest, penalty, and forms software prints ready-to-file 940, 941 (including Schedule B), 943, 944, and 945 forms.

**Tax941 Version 2011.2**

File Edit View Compute Reports Options Worksheets Help

Open Returns Save Prepare Totals Predictor 6656 Late File Late Pay Preview Print Calc

**Taxpayer: Mallard Duck Calls**  
**Current return: Federal 941, Period ending 03-31-11, Semi-weekly depositor**

Event	Date	Liability	Deposit	Tax Balance
Liability <b>A</b>	01-02-11 Sun	27,004.79		27,004.79
Deposit	01-03-11 Mon		27,004.79	0.00
Liability	01-17-11 Mon	26,892.58		26,892.58
Deposit	01-17-11 Mon		26,892.58	0.00
Liability	02-02-11 Wed	25,259.17		25,259.17
Deposit	02-02-11 Wed		25,259.17	0.00
Liability	02-17-11 Thu	27,236.21		27,236.21
Deposit	02-17-11 Thu		27,236.21	0.00
Adj Sick Pay	02-20-11 Sun	1,124.00		1,124.00
Liability	03-02-11 Wed	26,511.94		27,635.94
Deposit	03-02-11 Wed		27,635.94	0.00
Liability	03-17-11 Thu	25,988.66		25,988.66
Deposit	03-17-11 Thu		24,450.66	1,538.00
COBRA Subsidy	03-31-11 Thu		1,538.00	0.00
<b>Totals</b>		<b>160,017.35</b>	<b>160,017.35</b>	<b>0.00</b>

Press F1 for help

**Penalty and Interest Totals**

Current compute date	03-17-11
Deposit penalty--6656	560.00
Additional 5%--6656(b)(1)(B)	Inactive
Failure to file--6651(a)(1)	63.00
Failure to pay--6651(a)(2)	7.00
<b>Total penalties</b>	<b>630.00</b>
<b>Total interest</b>	<b>2.83</b>
<b>Unpaid tax</b>	<b>700.00</b>
<b>Grand total</b>	<b>1,332.83</b>

Change compute date to: 03-17-11

Report Recompute Close

## System Requirements:

- Supports Windows XP and above (including Windows 7 32-bit and 64-bit), and Windows Server 2008, 2003, and Terminal Services
- Citrix is being used successfully by TimeValue Software customers with no known issues in this environment
- At least 10MB RAM and 5MB disk space

Based on Revenue Procedure 99-10, relief is available for failure-to-deposit penalties. Savings can be as much as 50%. Take a look at TimeValue Software PayrollPenalty™ penalty-abatement software to instantly reduce IRS failure-to-deposit penalties for 940, 941, 943, and 945 filings.

*"I've used it for over ten years and love it. My accounting software has too many problems printing the forms. Tax941 software always prints good-looking forms. Your software is the only one that produces a rock solid 944 Form."*  
 – Terry H.

Copyright © 2011 TimeValue Software  
 All rights reserved • 05/11 • T941 • GEN • E • F • 001

**PENALTY COMPUTATION DETAIL REPORT (IRS PAYMENT ALLOCATION 2)**  
 Failure to deposit, Section 6656

Company: Terry Lund's Bakery  
 EIN: 77-7777777  
 Return: Federal 941  
 Period ending: 09-30-06  
 Type of depositor: Semi-weekly  
 Status as of: 10-15-06

**Form 941 for 2009: Employer's QUARTERLY Federal Tax Return** 12-67  
 (Rev. January 2009) OMB No. 1545-0029 970109

Trade name (if any): O'Hare Plumbing, Inc.  
 Address: 22 Mauchly Irvine, CA 92618

Part I: Answer these questions for this quarter.  
 1 Number of employees who received wages, tips, or other compensation for the pay period including: Max. 12 (Quater 1), June 12 (Quater 2), Sept. 12 (Quater 3), Dec. 12 (Quater 4)

2 Wages, tips, and other compensation 1 4

3 Income tax withheld from wages, tips, and other compensation 2 40000.00

4 If no wages, tips, and other compensation are subject to social security or Medicare tax 3 8696.17

5a Taxable social security and Medicare wages and tips 1000.00 x 124 = 124.00

5b Taxable social security wages

**TIMEVALUE**  
 software

**Accuracy Matters**

22 Mauchly, Irvine, California 92618-2306 • www.TimeValue.com  
 1-949-727-1800 • 1-800-426-4741 (within USA) • Fax 1-949-727-3268